



Forest Service
U.S. DEPARTMENT OF AGRICULTURE



Valentine Fire Final Update Wednesday, Oct. 4, 2023

Size: 9644 acres
Cause: Lightning
Completion: 99%
Total personnel: 145

Start Date: August 16, 2023
Location: 11 miles northeast of Young, Arizona and 27 miles east of Payson, Arizona
Fuels: Ponderosa Pine, Hardwood litter and timber

Highlights: The Forest Service Road 200 (Chamberlain Trail) opened at 8 p.m. Tuesday, Oct. 3. This will be the last update for the Valentine Fire to be posted on sign boards or distributed to local businesses. For any future information, please utilize the links and contacts at the bottom of page. All communities and ranches near the Valentine Fire have been removed from SET evacuation status but will remain in READY status. Colcord Estates, Ponderosa Springs, Gordon Canyon Estates 13 Ranch and Gillette Ranch.

Operations: Tuesday all areas of the fire had minimal fire activity. Crews continued to monitor and patrol these areas. Today crews will monitor, patrol, and mop up any areas of concern.

Fire Ecology: 'Fire regime' is a term that is used to describe the typical roles of fire in specific vegetation types. The two most used measures for a fire regime are frequency (how often an area burns) and severity (how much change there is before and after a fire). A ponderosa pine forest has a high frequency/low severity fire regime because it evolved with frequent fires which did not kill most of the dominant vegetation (ponderosa pines). Grasslands usually have a high frequency/high severity fire regime because fires consume most of the dominant vegetation (grass).

Weather: Northeast wind are forecasted to develop early Wednesday, and peak mid to late morning. Wind speeds will generally remain 5-10 mph with gusts to around 20 mph, especially over the ridges and aligned northeast to southwest canyons. High in the upper 60s to low-70s with afternoon humidity in the upper teens to mid-20s.

Closures: An emergency closure order for the Valentine Fire has gone into effect as of 6 a.m. Sept. 5, 2023. The public is asked to avoid the fire area. The purpose of the closure order is to protect public health and safety during the Valentine Fire, and to protect assigned firefighting personnel engaging in wildland firefighting operations. As of 8 p.m., Oct. 3, 2023, Forest Service Road 200 opened to the public. All roads connecting to FS RD 200 will remain closed. Please visit the Alerts and Notices page for more information. <https://www.fs.usda.gov/alerts/tonto/alerts-notice>.

Safety: The health and safety of firefighters, and the public are always the highest priority. Members of the public are asked to avoid the fire area.

Smoke: The fire will continue to produce smoke due to fuel accumulation. Smoke from the Valentine Fire may be visible in the surrounding areas for many days. Due to changing weather conditions, smoke from other wildfires and prescribed fires may contribute to smoke impacts in the area. Smoke-sensitive individuals and people with respiratory problems or heart disease are encouraged to take precautionary measures. An interactive smoke map available at, <https://www.airnow.gov/wildfires/> allows you to zoom into your area to see the latest smoke conditions.

Information Links and Contacts

Tonto National Forest: <https://www.fs.usda.gov/main/tonto/fire>

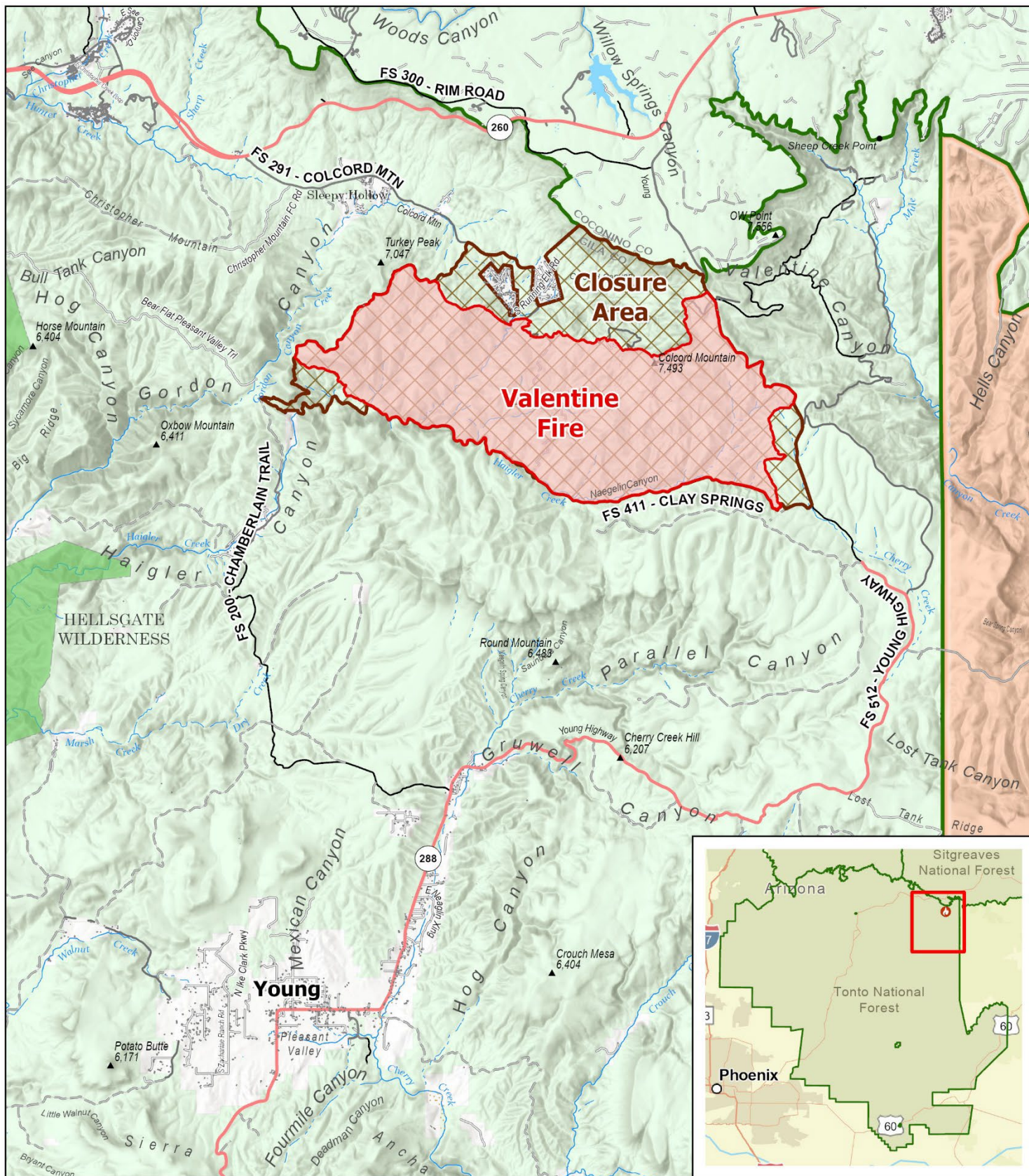
InciWeb: <https://inciweb.nwcg.gov/incident-information/aztnf-valentine-fire>

Email: 2023.valentine@firenet.gov

Fire Information Line: (928)-421-4579 • Office Hours: 8:00 AM – 8:00 PM



<https://linktr.ee/valentinefire>



PUBLIC INFORMATION

Valentine Fire
AZ-TNF-1315
10/4/2023

9,644 acres at 10/2/2023

1:125,000 - Tonto GIS

10/3/2023 1753

Acres from IR and GPS

North American 1983 Datum, LatLong Grid

Wildfire Perimeter

Closure Area

Secondary Highway

Secondary Dirt Road

Wilderness

Lake / Pond

Forest Service Boundary

Forest Service Land

Tribal Land

State Land

